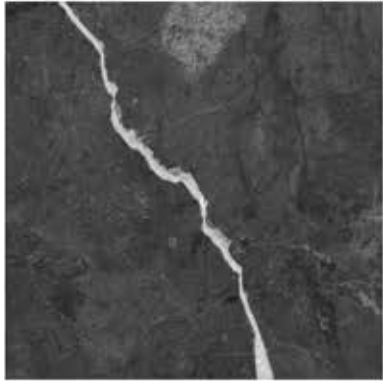


The background of the image is a collage of three different marble patterns. The top section is a dark, almost black marble with intricate, light-colored veins. The middle section is split into two halves: the left half is a light-colored marble with grey and brown veins, and the right half is a warm-toned marble with orange, yellow, and brown veins. The bottom section is a light-colored marble with soft, greyish veins.

MÁRVÁNY MINTÁK
MARBLE PATTERNS

IdeaDecor

M01



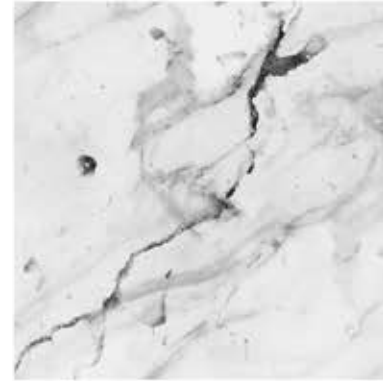
M02



M03



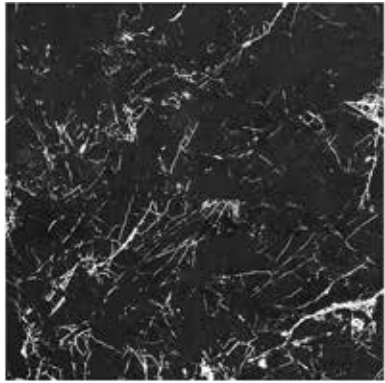
M04



M05



M06



M07



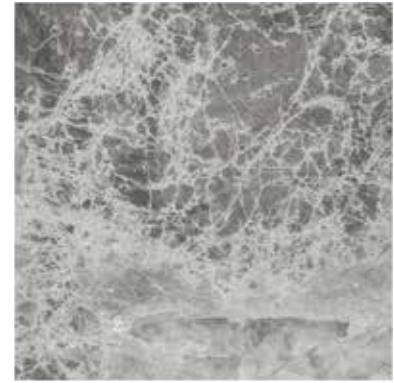
M08



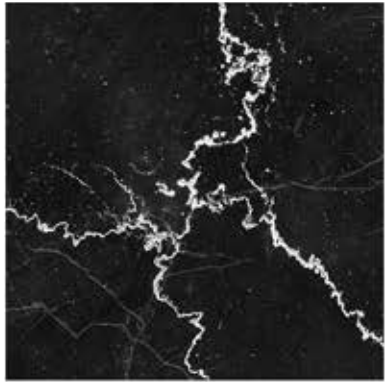
M09



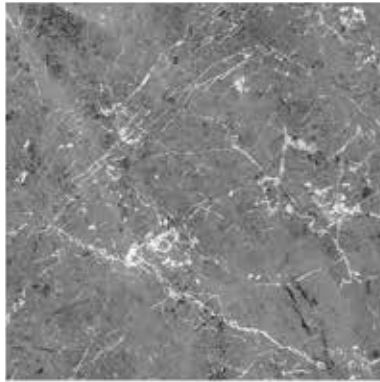
M10



M11



M12



M13



M14



M15



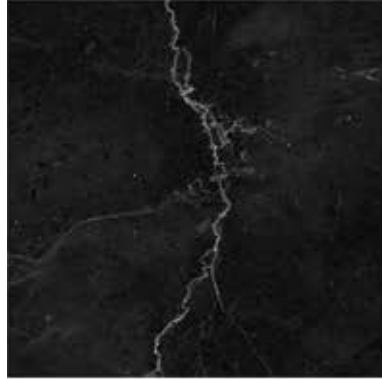
M16



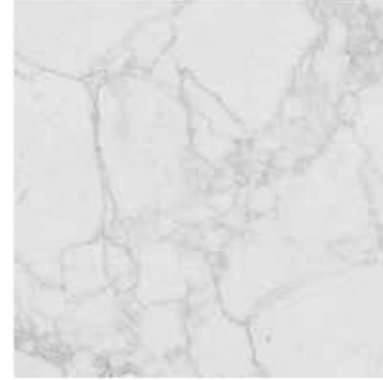
M17



M18



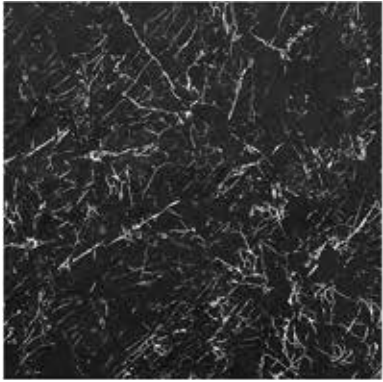
M19



M20



M21



M22



M23



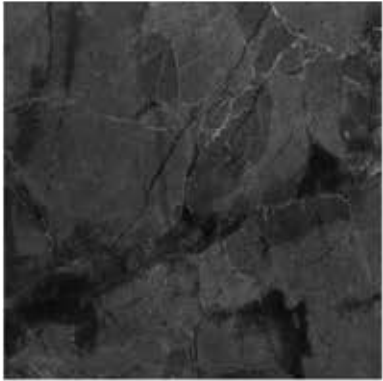
M24



M25



M26



M27



M28



M29



M30

